



## HIDE PRODUCTS



**IVORY HAIR-ON-HIDE CONCEAL  
CARRY CC-13701**



**HIDE WEEKENDER TOTE HWT-1201**



#### Product Details

## STYLE MEETS FUNCTION WITH CONCEALED CARRY BAGS

Bring together rugged beauty and everyday function with the Myra Sierra Fawn Hairon Leather Concealed Carry Bag. Designed in genuine hair-on leather with warm fawn and white patterns, these ccw bags blend rustic Western charm with modern practicality. The structured silhouette, weaving accents on the handles, and a detachable adjustable strap make it versatile to carry as a handbag or crossbody. Thoughtfully built with an inside phone compartment and concealed carry feature, our concealed carry purses keep your essentials secure and accessible.

### FEATURES OF MYRA'S WESTERN CONCEALED CARRY PURSE

- Genuine hair-on leather with fawn-white patterns
- Detailed weaving on sturdy leather handles
- Concealed carry pocket for added security
- Adjustable strap for crossbody or shoulder carry
- Inside the phone compartment, and organised storage

### DIMENSIONS OF MYRA CONCEALED CARRY

#### Product Details

Large Main Compartment with Zipper Closure , Carry Your Way - Leather Top Handles. The canvas that these fashionable bags are made out of is smooth and breathable. Complete roomy interior with extra large interior compartments, have your twins and family all packed up with room for their daily necessities or even for long distance travel.

#### Material

- Canvas & Leather

#### Dimensions (in inches)

- **Width** : 20
- **Depth** : 8.5
- **Height** : 15.5
- **Handle** : 10

**Care** : Dry Clean only. Keep away from water

**Note:-** Cowhide upper is natural and will wear under normal conditions. Each product will vary slightly as each piece of hide will have a unique pattern.

**Weight** 6 lbs

[Read More](#)

**Price:** \$44.00

**Category:** [Hide Purses](#)

## PURSE (IN INCHES)

- Width: 12.5
- Depth: 3.5
- Height: 10.5
- Handle: 5
- Shoulder: 24

## MATERIALS USED IN MYRA'S CONCEALED CARRY BAGS

- Leather
- Hairon

**Care:** Avoid water, humidity, and direct sunlight.

**Note:-** Cowhide upper is natural and will wear under normal conditions. Each product will vary slightly as each piece of hide will have a unique pattern.

**Weight** 3 lbs  
**Dimensions** 13.5 x 12.5 x 3 in

[Read More](#)

**Price:** \$118.00

**Category:** [Hide Purses](#)



## HIDE WEEKENDER DUFFLE BAG SKU#1159



### Material

- Dimensions (in inches)
- **Width** : 21
- **Depth** : 11.5
- **Height** : 16
- **Handle** : 10
- **Shoulder** : 20



### Product Details

Made up of natural thick cowhide Leather. Strong stitching, handcrafted by professional artisans for long lasting durability that looks

## HIDE WEEKENDER DUFFLE BAG SKU #1122



### Product Details

Made up of natural Thick cowhide Leather. Strong stitching, handcrafted by professional artisans for long lasting durability that looks better with age. Shoulder straps and handle for use as a weekender bag or gem bag. It's detachable, padded and adjustable shoulder straps for added comfort.

### Material

- Hairon & Leather

### Dimensions (in inches)

- **Width** : 24
- **Depth** : 9.5
- **Height** : 10
- **Handle** : 9.5
- **Shoulder** : 30.5

**Care** : Dry Clean only. Keep away from water

**Note:-** Cowhide upper is natural and will wear under normal conditions. Each product will vary slightly as each piece of hide will have a unique pattern.

**Weight** 6 lbs

[Read More](#)

better with age. Shoulder straps and handle for use as a weekender travel bag or gym bag. It's detachable and adjustable shoulder straps for added comfort.

**Price:** \$172.00

**Category:** [Hide Purses](#)

**Material**

- Hairon & Leather

**Dimensions (in inches)**

- **Width :** 21
- **Depth :** 11.5
- **Height :** 16
- **Handle :** 10
- **Shoulder :** 20

**Care :** Dry Clean only. Keep away from water

**Note:-** Cowhide upper is natural and will wear under normal conditions. Each product will vary slightly as each piece of hide will have a unique pattern.

**Weight**            6 lbs

[Read More](#)

**Price:** \$158.00

**Category:** [Hide Purses](#)



## HIDE WEEKENDER DUFFLE BAG HP9527



### Product Details

This spectacular duffle bag is simply remarkable with its exquisite use of textures and color. Premium bright turquoise leather, hand-tooled leather accents, and hair-on hide all add an artisanal touch. Perfect for the discerning traveler who appreciates timeless design, durability, and functionality, plus craftsmanship. Zipper-close top with convenient end zippered pockets. Durable leather carrying handles and removable, adjustable shoulder strap are in matching leather.

#### Material

- Hairon & Leather

#### Dimensions (in inches)

- **Width** : 22
- **Height** : 11
- **Handle** : 10
- **Shoulder:** 22
- **Depth** : 8.5

**Care** : Dry Clean only. Keep away from water

**Note:-** Cowhide upper is natural and will wear under normal conditions. Each product will vary slightly as each piece of hide will have a unique pattern.

## HIDE WEEKENDER DUFFLE BAG HP9525



### Product Details

This amazing duffle bag stands out with its exquisite blend of textures and craftsmanship. Premium sunrise yellow leather, hand-tooled leather accents, and hair-on hide all add a touch of artisanal depth. Ideal for the discerning traveler who appreciates craftsmanship, durability, functionality, and timeless design. Zipper-close top with convenient end zippered pockets. Durable leather carrying handles and removable, adjustable shoulder strap are in matching leather.

#### Material

- Hairon & Leather

#### Dimensions (in inches)

- **Width** : 22
- **Height** : 11
- **Handle** : 10
- **Shoulder:** 22
- **Depth** : 8.5

**Care** : Dry Clean only. Keep away from water

**Note:-** Cowhide upper is natural and will wear under normal conditions. Each product will vary slightly as each piece of hide will have a unique pattern.

**Weight** 6 lbs

[Read More](#)

**Price:** \$142.00

**Category:** [Hide Purses](#)



**HIDE WEEKENDER DUFFLE BAG  
HP1122**



**Weight** 6 lbs

[Read More](#)

**Price:** \$142.00

**Category:** [Hide Purses](#)



**HIDE WEEKENDER DUFFLE BAG HDB  
#1317**





#### Product Details

Made up of natural Thick cowhide Leather. Strong stitching, handcrafted by professional artisans for long lasting durability that looks better with age. Shoulder straps and handle for use as a weekender bag or gem bag. It's detachable, padded and adjustable shoulder straps for added comfort.

#### Material

- Hairon & Leather



#### Product Details

Made up of natural Leather. Strong stitching, handcrafted by professional artisans for long lasting durability that looks better with age. Shoulder straps and handle for use as a weekender bag or gem bag. It's detachable, adjustable shoulder straps for added comfort.

#### Material

- Leather & Hairon

#### Dimensions (in inches)

- **Width** : 17
- **Depth** : 10
- **Height** : 14
- **Handle** : 7.5
- **Shoulder** : 21

**Care** : Dry Clean only. Keep away from water

**Note:-** Cowhide upper is natural and will wear under normal conditions. Each product will vary slightly as each piece of hide will have a unique pattern.

**Weight** 6 lbs

[Read More](#)

**Price:** \$152.00

**Category:** [Hide Purses](#)

**Dimensions (in inches)**

- **Width** : 24
- **Depth** : 9.5
- **Height** : 10
- **Handle** : 9.5
- **Shoulder** : 30.5

**Care** : Dry Clean only. Keep away from water

**Note:-** Cowhide upper is natural and will wear under normal conditions. Each product will vary slightly as each piece of hide will have a unique pattern.

[Read More](#)

**Price:** \$172.00

**Category:** [Hide Purses](#)



**HIDE WEEKENDER DUFFLE BAG SKU# 1124**



**HIDE WEEKENDER BAG HP10917**



#### Product Details

Made up of natural Leather. Strong stitching, handcrafted by professional artisans for long lasting durability that looks better with age. Shoulder straps and handle for use as a weekender bag or gem bag. It's detachable, padded and adjustable shoulder straps for added comfort.

#### Material

- Hairon & Leather

#### Dimensions (in inches)

- **Width** : 22.5
- **Depth** : 10.5
- **Height** : 16
- **Handle** : 10
- **Shoulder** : 30

**Care** : Dry Clean only. Keep away from water

**Note:-** Cowhide upper is natural and will wear under normal conditions. Each product will vary slightly as each piece of hide will have a unique pattern.

#### Product Details

Adventure will always meet luxury in our statement weekender, featuring authentic hair-on hide in striking black and white, paired with richly embossed leather in timeless scroll patterns. Spacious enough for getaways, this ranch-inspired carryall combines rugged elegance with practical design for the sophisticated traveler. You'll love this bag!

#### Material

- Hairon & Leather

#### Dimensions (in inches)

- **Width** : 19
- **Height** : 16
- **Handle** : 13
- **Depth** : 9

**Care** : Dry Clean only. Keep away from water.

**Note:-** Cowhide upper is natural and will wear under normal conditions. Each product will vary slightly as each piece of hide will have a unique pattern.

**Weight** 6 lbs

[Read More](#)

**Price:** \$90.00

**Category:** [Hide Purses](#)



### Product Details

Made up of natural Leather. Strong stitching, handcrafted by professional artisans for long lasting durability that looks better with age. Shoulder straps and handle for use as a weekender bag or gem bag. It's detachable, padded and adjustable shoulder straps for added comfort.

### Material

- Hairon & Leather

### Dimensions (in inches)

- **Width** : 22.5
- **Depth** : 10.5
- **Height** : 16
- **Handle** : 10
- **Shoulder** : 30

**Care** : Dry Clean only. Keep away from water

**Note:-** Cowhide upper is natural and will wear under normal conditions. Each product will vary slightly as each piece of hide will have a unique pattern.

**Weight**            6 lbs

[Read More](#)

**Price:** \$192.00

**Category:** [Hide Purses](#)



Code-7462

## HIDE WEAVE BACK PACK CONCEALED CARRY CC 7462

This wonderfully alluring backpack offers a charming pattern of patchwork hair-on hide on the front, and beautiful high-grained warm chocolate leather on the back. The roomy interior offers several sections and a zipper-close top. Matching leather carrying handles and fully detachable, adjustable shoulder straps. An incredible design in an incredible bag!

Approximate Measurements:

Depth: 3"  
Width: 15.5  
Height: 14"  
Weight: 1.78lb

**Weight** 3 lbs  
**Dimensions** 13.5 x 12.5 x 3 in

[Read More](#)



## HAIR-ON-HIDE WEEKENDER BAG WHB-12115



Product Details

## EMBRACE YOUR INNER COWGIRL ON THE GO WITH MYRA WESTERN WEEKENDER BAG

Make every getaway a bold statement with

**Price:** \$118.00

**Category:** [Hide Purses](#)

the Myra Saddle Belle Hairon Canvas Weekender Bag in Wild Clay. A true blend of Western flair and modern functionality, this weekender bag features a striking hairon hide front panel paired with textured canvas and saddle-toned leather accents. Spacious yet stylish, it's ideal for spontaneous trips, weekend festivals, or road-bound adventures. Whether you're dressing up for a rodeo or escaping into the wilderness, this Myra weekender bag offers just the right amount of rugged charm and practical ease.

### **Myra Weekender Bag Features**

- Hairon Hide and Canvas Blend
- Saddle-Brown Leather Detailing
- Durable Top Handles for Travel Ease
- Roomy Interior with Zipper Closure

### **Myra's Weekender Bags for Women Dimensions(in inches)**

- Height: 16
- Width: 20
- Handle:13
- Depth:8

### **Materials Used in Myra's Western Weekender Bag**

- Leather
- Cotton
- Hairon Leather

Care: Dry clean only. Keep away from water.

**Weight** 6 lbs

**Dimensions** 16 × 20 × 16 in

[Read More](#)

**Price:** \$78.00

**Category:** [Hide Purses](#)



**HAIR-ON-HIDE TOTE BAG TB-6751**



**CONCEAL CARRY WEAVE HIDE BAG  
CC-8073**



**Product Details**

This compelling entry in our Bison Ridge collection features the hallmark tribal-inspired upcycled rug design along with a front panel



**Product Details**

Always distinctive and unique, the front of this amazing bag features our signature hair-on hide in a glorious weave pattern. The reverse is a stunning rich caramel leather, complete with an extra zippered pocket. The roomy interior will hold your belongings in style. You'll adore the looks of this gorgeous bag!

of gorgeous hair-on hide. Back panel is woven canvas in cool charcoal with extra zippered pocket. Zipper-close top with durable carrying handles and adjustable, removable shoulder strap in caramel leather.

**Material**

- Canvas, Hairon , Rug & Leather

**Dimensions (in inches)**

- **Width** : 18.5
- **Height** : 14
- **Handle** : 12
- **Shoulder**: 22
- **Depth** : 4

**Note:-** Cowhide upper is natural and will wear under normal conditions. Each product will vary slightly as each piece of hide will have a unique pattern.

**Weight**            3 lbs  
**Dimensions**    18.5 × 14 in

[Read More](#)

**Price:** \$64.00

**Category:** [Hide Purses](#)

**Material**

- Hairon & Leather

**Dimensions (in inches)**

- **Width** : 15
- **Height** : 12.5
- **Handle** : 11
- **Depth** : 5

**Note:-** Cowhide upper is natural and will wear under normal conditions. Each product will vary slightly as each piece of hide will have a unique pattern.

**Weight**            3 lbs  
**Dimensions**    13.5 × 12.5 × 3 in

[Read More](#)

**Price:** \$118.00

**Category:** [Hide Purses](#)



## **BROWN FRECKELED CONCEAL CARRY - 3348**



### Product Details

An elegant hair designer bag with two adaptable leather straps, crafted to meet your style and convenience. The hairon leather in the front along with fringes gives a chic element to the bag.

### Dimensions (in inches)

- **Width** : 10.5
- **Height** : 8.5
- **Handle** : 7.5

- **Shoulder:** 22
- **Depth :** 3

**Care :** Dry Clean only. Keep away from water

**Note:-** Cowhide upper is natural and will wear under normal conditions. Each product will vary slightly as each piece of hide will have a unique pattern.



An elegant hair designer bag with two adaptable leather straps, crafted to meet your style and convenience. The hairon leather in the front along with fringes gives a chic element to the bag.

Approximate Measurements:

Depth: 3"

Width: 10.5"

Height: 8.5"

Weight: 1.5 lbs.

**Weight** 3 lbs

**Dimensions** 13.5 × 12.5 × 3 in

[Read More](#)

**Price:** \$64.00

**Category:** [Hide Purses](#)

## SKULLS



### TIM WALZ - TL STEER SKULL #9334

Tim Walz - TL Steer Skull #9334

**Tim Walz** --- comes with photo nursing his mother. He hates this photo and gets mad when the other steers see him as a calf nursing. It is an ego thing. Needle points. Every color in the bag. Beautiful symmetrical shape. Raised at DCC.

**78.25" Tip to tip**

**Custom packing and boxing charge included. Shipping cost will be added to this price.**

**Weight** 24 lbs  
**Dimensions** 30 x 30 x 12 in

[Read More](#)

**Price:** \$950.00

**Category:** [Skulls](#)

**Tag:** [Skull](#)



### STOPPING POINT - TL STEER SKULL #9323

Stopping Point - TL Steer Skull #9323

**Stopping Point** --- Not for sale. DCC permanent collection. Has registration certificate, photo of sire and dam. This is the most black of any skull every polished at LHHT. This is one in 5000 for rare color.

**77" Tip to tip**

**Custom packing and boxing charge included. Shipping cost will be added to this price.**

**Weight** 400 lbs  
**Dimensions** 80 x 80 x 80 in

[Read More](#)

**Price:**

**Category:** [Skulls](#)

**Tag:** [Skull](#)



## SOJU - TL COW SKULL #9401

Soju - TL Cow Skull #9401

**Soju** --- Was a daughter of Reckon So, the first great son of Dragon Pearl. Although her pedigree is high as a woodpecker's nest in the Red Wood Forest, she was not a good "doer." She would get poor in the winter. Comes with actual registration certificate and photo of live cow.

**55" Tip to tip**

**Custom packing and boxing charge included. Shipping cost will be added to this price.**

**Weight** 25 lbs  
**Dimensions** 30 x 30 x 12 in

[Read More](#)

**Price:** \$490.00

**Category:** [Skulls](#)

**Tag:** [Skull](#)



## SNEAKY PETE - TL STEER SKULL #9160

Sneaky Pete - TL Steer Skull #9160

**Sneaky Pete** --- was a victim of the Texas drought. As a result of his real long horns he started stretching up in the trees and pulling down branches to eat the leaves. The other cattle mood and cheered as he pulled down limbs for all to eat. Finally his owner saw the pecan and apple trees only had a few limbs on the very top, so he put him in a cattle auction, and here he is. His motives were good, but the fruit trees cost him all.

**79.5" tip to tip**

**Custom packing and boxing charge included. Shipping cost will be added to this price.**

**Weight** 25 lbs  
**Dimensions** 30 x 30 x 12 in

[Read More](#)

**Price:** \$1,470.00

**Category:** [Skulls](#)

**Tag:** [Skull](#)



## **SLIGHT OF HAND - TL STEER SKULL #6552**

Slight Of Hand - TL Steer Skull #6552

**Slight Of Hand** --- This is a near perfect symmetrical western polish skull with the 26 step DCC process. No beetles in the process. The skulls available over 100" can be counted on your fingers. Very rare. Comes with photo at age 2 and maturity. This skull is a masterpiece.

**101.25" tip to tip**

**NOTICE:\*\*\*Skull Cost only. This will need a custom box.**

**\*\*\*Call Office for shipping details.**

**Weight** 160 lbs  
**Dimensions** 100 x 110 x 30 in

[Read More](#)

**Price:** \$5,900.00

**Category:** [Skulls](#)

**Tag:** [Skull](#)



## **SHAD - TL STEER SKULL #7428**

Shad - TL Steer Skull #7428

**Shad** --- He is text-book symmetrical. Unbelievable needle pointed horns. Notice the horn transparent and opec tones rust, ivory, gold, Carmel, copper and mahogany. He had a surprise coyote visit removing some nose bone-tips which was uncalled for. All LH TT skulls house broke. They will make you a proud westerner.

**80.25" tip to tip**

**Custom packing and boxing charge included. Shipping cost will be added to this price.**

**Weight** 25 lbs  
**Dimensions** 30 x 30 x 12 in

[Read More](#)

**Price:** \$1,140.00

**Category:** [Skulls](#)

**Tag:** [Skull](#)



## RIGHT TIME - TL COW SKULL #9317

Right Time - TL Cow Skull #9317

**Right Time** --- had amazing color streaks in her lateral horn with transparent gold, silver and ivory tones. Standard 26 step process for all LHTT western polished skulls. Comes with photos of the living cow, ITLA registration certificate included. She had a Hillary sort of attitude and did not calve often--bad habit.

**72-5/8" Tip to tip**

**Custom packing and boxing charge included. Shipping cost will be added to this price.**

**Weight** 24 lbs  
**Dimensions** 30 x 30 x 12 in

[Read More](#)

**Price:** \$770.00

**Category:** [Skulls](#)

**Tag:** [Skull](#)



## POINT DANCE - TL COW SKULL #7471

Point Dance - TL Cow Skull #7471

**Point Dance** --- In early spring she slid down a steep Appalachian hill, landing under a tree in the mud and could not be saved in time. Comes with photo as a baby heifer and a mature cow. Also post card of sire and original registration certificate. She has 3 progeny in the DCC permanent herd. A collector's symmetrical perfect skull.

**88.5" tip to tip**

**Custom packing and boxing charge included. Shipping cost will be added to this price.**

**Weight** 36 lbs  
**Dimensions** 32 x 32 x 22 in

[Read More](#)

**Price:** \$1,920.00

**Category:** [Skulls](#)

**Tag:** [Skull](#)



## POINT AURA - TL COW SKULL #9152

Point Aura - TL Cow Skull #9152

**Point Aura** --- Was a Dickinson Cattle Co raised cow that raised 5 calves and was replaced in the herd by a daughter that was much higher quality. Comes with a photo of the live cow and International registration certificate. As with all LHTT skulls, it is the 26 step western polish secret process.

**63-7/8" Tip to tip**

**Custom packing and boxing charge included. Shipping cost will be added to this price.**

**Weight** 20 lbs  
**Dimensions** 28 x 28 x 12 in

[Read More](#)

**Price:** \$840.00

**Category:** [Skulls](#)

**Tag:** [Skull](#)



## PICK POCKET - TL COW SKULL #9159

Pick Pocket - TL Cow Skull #9159

**Pick Pocket** ---is a young daughter of Time Line out of Pokey Pack by Tuff. Secret 26 step western polish process as with all LHTT skulls. Comes with photo of living cow.

**64" Tip to tip**

**Custom packing and boxing charge included. Shipping cost will be added to this price.**

**Weight** 25 lbs  
**Dimensions** 30 x 30 x 12 in

[Read More](#)

**Price:** \$570.00

**Category:** [Skulls](#)

**Tag:** [Skull](#)



## OVER LAP - TL COW SKULL #7542

Over Lap - TL Cow Skull #7542

**Over Lap** --- A wonderful producing cow that left a rich number of her genetics in the Dickinson Cattle Co herd. She was a beautiful color which often transposes into horn coloration. Comes with a historic article about her with photos and the original registration certificate. She won one Grand Championship at the ORVTLA show.

**87.5" tip to tip**

**Custom packing and boxing charge included. Shipping cost will be added to this price.**

**Weight** 36 lbs  
**Dimensions** 30 x 30 x 14 in

[Read More](#)

**Price:** \$1,830.00

**Category:** [Skulls](#)

**Tag:** [Skull](#)



## NAME DROPPER - TL COW SKULL #9086

Name Dropper - TL Cow Skull #9086

**Name Dropper** --- She was white as a caught bureaucrat with a few dime size red spots. Comes with registration ITLA certificate, post card of Tibbs her sire, photos of her mature and at 8 months old. She has horn tips as sharp and erect as a road-kill porcupine. She only had one daughter named Hillary who only had 3 quarters.

**71.25" Tip to tip**

**Custom packing and boxing charge included. Shipping cost will be added to this price.**

**Weight** 36 lbs  
**Dimensions** 30 x 30 x 14 in

[Read More](#)

**Price:** \$880.00

**Category:** [Skulls](#)

**Tag:** [Skull](#)



## JUMA IN DRAG 2021 - TL STEER SKULL #9321

Juma In Drag 2021 - TL Steer Skull #9321

**Juma In Drag 2021 Steer** --- Standard state of the art 26 step polishing process. No yellowing varnish like the competitors. He is a son of Cut'n Dried out of a Drag Iron daughter. He didn't give milk or raise calves so a skull he is. Comes with live steer photo, photo of dam and post card of sire. Who could ask for more.

**70.25" Tip to tip**

**Custom packing and boxing charge included. Shipping cost will be added to this price.**

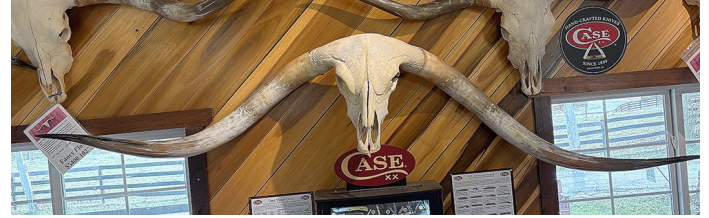
**Weight** 24 lbs  
**Dimensions** 30 x 30 x 12 in

[Read More](#)

**Price:** \$730.00

**Category:** [Skulls](#)

**Tag:** [Skull](#)



## JESSIE LINE - TL STEER SKULL #9161

Jessie Line - TL Steer Skull #9161

**Slight Of Hand** --- This is a near perfect symmetrical western polish skull with the 26 step DCC process. No beetles in the process. The skulls available over 100" can be counted on your fingers. Very rare. Comes with photo at age 2 and maturity. This skull is a masterpiece.

**116.25" tip to tip**

**NOTICE:\*\*\*Skull Cost only. Local pickup Recommended. For shipping, this will need a custom box.**

**\*\*\*Call Office for shipping details.**

**Weight** 160 lbs  
**Dimensions** 100 x 110 x 30 in

[Read More](#)

**Price:** \$6,500.00

**Category:** [Skulls](#)

**Tag:** [Skull](#)



## **HOOT MCGROOT - TL COW SKULL #9403**

Hoot McGroot - TL Cow Skull #9403

**Hoot McGroot** --- had a bossy attitude and very few liked her as well as she liked herself. Every time people took photos of the herd she would run out of the herd, stand up in front of the photographers and hold her horns up high. It finally got really old. When the tour bus came into her pasture she would run and put her head in the door to steal cow candy. Just plain rude.

**53.35" Tip to tip**

**Custom packing and boxing charge included. Shipping cost will be added to this price.**

**Weight** 25 lbs  
**Dimensions** 30 x 30 x 12 in

[Read More](#)

**Price:** \$555.00

**Category:** [Skulls](#)

**Tag:** [Skull](#)



## **HOOKING HARRY - TL STEER SKULL #9077**

Hooking Harry - TL Steer Skull #9077

**Hooking Harry** --- his is not the type steer that came up the 1880 cattle trails. Never did any steer of record walk the trails with this wide of horns. This is the new and improved Texas Longhorn with only the best of the widest horn spreads. (Of course the 26 step polish process) Hand finished to perfection. No bugs used. No cheap paint.

**86.75" Tip to tip**

**Custom packing and boxing charge included. Shipping cost will be added to this price.**

**Weight** 36 lbs  
**Dimensions** 32 x 32 x 24 in

[Read More](#)

**Price:** \$3,825.00

**Category:** [Skulls](#)

**Tag:** [Skull](#)



## HEVER HANNA - TL COW SKULL #9400

Hever Hanna - TL Cow Skull #9400

**Hever Hanna** --- Occasionally the store buys Texas longhorn cows from local ranchers for the lean beef inventory. It is amazing the small horn base some of these cows have when the ranch raises World Champion Longhorned cattle. Hever will still make a striking appearance for a fire place or over the door of a pole dancing facility. Has the LHT 26 step polishing process.

**53.5" Tip to tip**

**Custom packing and boxing charge included. Shipping cost will be added to this price.**

**Weight** 24 lbs  
**Dimensions** 30 x 30 x 12 in

[Read More](#)

**Price:** \$685.00

**Category:** [Skulls](#)

**Tag:** [Skull](#)



## FIRST DRAFT - TL COW SKULL #5934

First Draft - TL Cow Skull #5934

**First Draft** --- she was a wide horned cow for her age, but one disappointment after another. One year a still born heifer, the next year a scroungy bull, the next year she decided not to breed, the next year a skinny heifer, and on to syndication in one pound packs. Skull includes photo of the live cow and registration certificate.

**79-3/4" tip to tip**

**Custom packing and boxing charge included. Shipping cost will be added to this price.**

**Weight** 36 lbs  
**Dimensions** 30 x 30 x 14 in

[Read More](#)

**Price:** \$1,420.00

**Category:** [Skulls](#)

**Tag:** [Skull](#)



## FANCY FLOW - TL STEER SKULL #5869

Fancy Flow - TL Steer Skull #5869

**Fancy Flow** --- was born at Dickinson Cattle Co on a cold April 10 day. He had a good life with all the Appalachian grasses he could consume every day. His mom never tucked him in with an empty stomach. His 26 step polish process is the finest in the industry. If this skull isn't perfect, it is very close. Comes with photos as a living steer and ITLA registration certificate. This is a one of a kind art piece.

**102" tip to tip**

**Custom packing and boxing charge included. Shipping cost will be added to this price.**

**Weight** 36 lbs  
**Dimensions** 32 x 32 x 25 in

[Read More](#)

**Price:** \$5,440.00

**Category:** [Skulls](#)

**Tag:** [Skull](#)



## DUSTY ICE STEER - TL STEER SKULL #9232

Dusty Ice Steer - TL Steer Skull #9232

**Dusty Ice Steer** --- He was more high horned than most DCC steers. His horns are cracked at the base but it doesn't affect the total image or shape. Comes with photo of him as a live steer and his mother. Price reduced due to small horn base cracks.

**84.25" tip to tip**

**Custom packing and boxing charge included. Shipping cost will be added to this price.**

**Weight** 28 lbs  
**Dimensions** 30 x 30 x 14 in

[Read More](#)

**Price:** \$2,470.00

**Category:** [Skulls](#)

**Tag:** [Skull](#)



## DRIED IRON - TL STEER SKULL #9158

Dried Iron - TL Steer Skull #9158

**Dried Iron** --- this 2020 steer is by Cut'n Dried out of Iron Queen. His horns are like ivory with chocolate streaks. Comes with post card of sire, photo as a living steer and a photo of his mother.

**77.25" tip to tip**

**Custom packing and boxing charge included. Shipping cost will be added to this price.**

**Weight** 25 lbs  
**Dimensions** 30 x 30 x 12 in

[Read More](#)

**Price:** \$1,370.00

**Category:** [Skulls](#)

**Tag:** [Skull](#)



## DRAGON SHARD 2021 - TL STEER SKULL #9322

Dragon Shard 2021 - TL Steer Skull #9322

**Dragon Shard 2021 Steer** --- He is sired by Macanudo out of Dragon Shard by Drag Iron. He is half brother to famous Texas sire "Who Sharded." Notice the black needle points. Comes with photo of sire and dam and himself during life.

**70.5" Tip to tip**

**Custom packing and boxing charge included. Shipping cost will be added to this price.**

**Weight** 24 lbs  
**Dimensions** 30 x 30 x 12 in

[Read More](#)

**Price:** \$730.00

**Category:** [Skulls](#)

**Tag:** [Skull](#)



## **CRYPTIC SMILE - TL STEER SKULL #6551**

Cryptic Smile - TL Steer Skull #6551

**Cryptic Smile** --- This steer was a crypt orchid and required surgery. He has one horn slightly longer than the other. Comes with photos of him as a calf and at maturity. He was a son of Clear Win out of Winning Smile. Post card of his sire included. This is the 26 step western polish process. (not cheap beetle process)

**87-7/8" tip to tip**

**Custom packing and boxing charge included. Shipping cost will be added to this price.**

**Weight** 36 lbs  
**Dimensions** 30 x 30 x 15 in

[Read More](#)

**Price:** \$1,820.00

**Category:** [Skulls](#)

**Tag:** [Skull](#)



## **CLEAR LOVE - TL COW SKULL #9157**

Clear Love - TL Cow Skull #9157

**Clear Love** --- is a daughter of Clear Win and a grand daughter of \$120,000 Shadow Jubilee. Although she was a beautiful cow none of her progeny were as nice as her. Comes with ITLA Registration certificate, a post card of her sire and a photo of the live cow.

**82.5" tip to tip**

**Custom packing and boxing charge included. Shipping cost will be added to this price.**

**Weight** 25 lbs  
**Dimensions** 30 x 30 x 12 in

[Read More](#)

**Price:** \$1,820.00

**Category:** [Skulls](#)

**Tag:** [Skull](#)



## **CHUCK SCHUMER - TL STEER SKULL #9332**

Chuck Schumer - TL Steer Skull #9332

**Chuck Schumer** --- has the famous 26 step polishing DCC process. Comes with photo eating supper and post card of famous sire. If seen at night with a deer spotting light he appeared like a humongous wild Ohio skunk. This is rare.

**66 Tip to tip**

**Custom packing and boxing charge included. Shipping cost will be added to this price.**

**Weight** 25 lbs  
**Dimensions** 30 x 30 x 12 in

[Read More](#)

**Price:** \$530.00

**Category:** [Skulls](#)

**Tag:** [Skull](#)



## **BLISSFUL MORN - TL COW SKULL #9320**

Blissful Morn - TL Cow Skull #9320

**Blissful Morn** --- raised 7 calves in 7 years. Her horns are the sharpest needle points and black as a crow's arm pit. She never broke or splintered a horn so they much have been strong as nails. Comes with ITLA registration certificate photo of the living cow and post card of sire.

**66" Tip to tip**

**Custom packing and boxing charge included. Shipping cost will be added to this price.**

**Weight** 24 lbs  
**Dimensions** 30 x 30 x 12 in

[Read More](#)

**Price:** \$745.00

**Category:** [Skulls](#)

**Tag:** [Skull](#)

## WESTERN DECOR



### TEXAS LONGHORN TAPESTRY THROW - 2026

Texas Longhorn Tapestry Throw

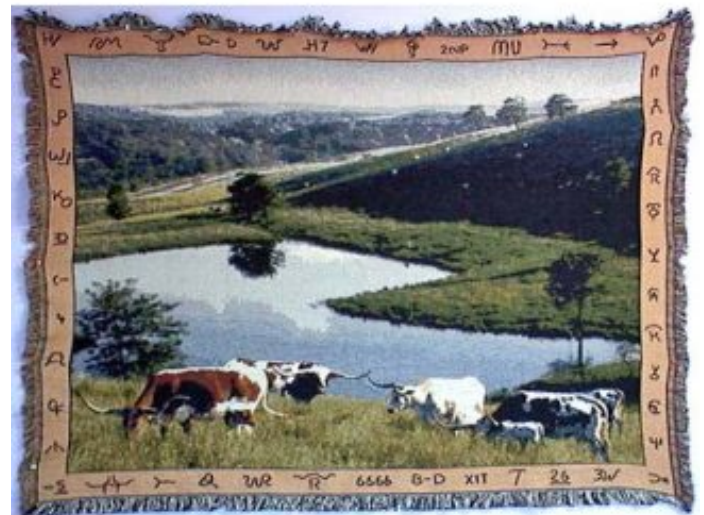
The 2026 Texas Longhorn Celebrity Calendar cover has been selected for a 50" x 70" full color cotton, washable throw for national distribution. It can be a colorful wall decor or keep you toasty warm. Purchase this art collectable from Christies New York or the Longhorns Head to Tail store, [www.head2tail.com](http://www.head2tail.com)

**Weight** 2 lbs  
**Dimensions** 12 x 12 x 4 in

[Read More](#)

**Price:** \$84.00

**Category:** [Western Decor](#)



### TEXAS LONGHORN TAPESTRY THROW - 2012

Texas Longhorn Tapestry Throw - 2012

A beautiful scenic on Dickinson Cattle Co is the nationally distributed Texas Longhorn Tapestry Throw. It is a 50" x 70" full color cotton, washable throw. It can be a colorful wall decor or keep you toasty warm on cold nights. The boarder is framed with famous ranch brands of King Ranch, McCombs, Shores, Mullendore, Butler, YO, John Wayne, 6666, Wichita Refuge, Wrights, Semkin, Wiescamp and Glendenning. Purchase this art collectable from Christies New York or the Longhorns Head to Tail store, [www.head2tail.com](http://www.head2tail.com)

**Weight** 2 lbs

**Dimensions** 12 × 12 × 4 in

[Read More](#)

**Price:** \$84.00

**Category:** [Western Decor](#)



## PUBLICATIONS



## GREETING CARDS

Texas Longhorn Greeting Cards: Featuring a beautiful scene on Dickinson Cattle Co and a perfect spotted Champion cow. Cards are blank to add your own personal message. 12 cards and envelopes \$12.50

[Read More](#)

**Price:** \$12.50

**Category:** [Publications](#)

