



## WESTERN DECOR



### LONGHORN HEAD MOUNT -- CALL FOR AVAILABILITY.

All of our Texas Longhorn Mounts have removable horns for easy hanging and shipping.

When we first started our mounts they had to be shipped by truck at great expense. The removable horns change the maximum size. We now ship UPS in a custom built wooden shipping crate. Shipping costs depend on location.

Colors Vary.

All the steers that we mount are bred, grown, and processed only with beautiful colored faces, wide twisty horns and the most professional workmanship.



### DELUXE PIZZLE PUTTER

Deluxe Pizzle Putter: The highest quality cured bull part canes. This is the ultimate golfing talking piece and is a pretty good putter. Tiger Woods wouldn't go anywhere without his. They are long, rigid and state of the art quality. Highly appreciated by preachers, politicians, cannibals and Longhorn producers. Each is different, and all have a very hard-pointed history.

Handling charges included.

**Weight** 3 lbs

[Read More](#)

**Price:** \$100.00

**Category:** [Western Decor](#)

The form used for the mount was custom developed from original actual skulls and living animals. This quality of form is not available to other "run-of-the-mill" taxidermists that simply use the mounts available to them from general taxidermy supply catalogs.

Specimen exhibition quality mounts are completed every 30-40 days. Mounts are usually sold within a day or two of completion. If you are interested in obtaining one of our high quality Texas Longhorn Mounts, please contact us to add your name to the list. We will send out a notice of completed mounts with photos, measurements and prices as mounts are delivered from the taxidermist.

**This is an example only.  
Inventory posted as we get new ones.**

**Call for availability and price: 740  
758-5050**

**CHECK OUT THESE OTHER  
HEADMOUNT PAGES:**  
**[HAPPY CLIENT PHOTOS](#)**  
**[HEADMOUNT GALLERY](#)**  
**[ORDERING INFORMATION](#)**  
**[UNPACKING A HEADMOUNT](#)**

**Weight** 200 lbs

[Read More](#)

**Price:** \$0.00

**Category:** [Western Decor](#)



## DELUXE BULL CANES

Deluxe Bull Canes: The highest quality cured bull part canes. Some have inlaid Indian head nickels. They are long, rigid and state of the art quality. Highly appreciated by preachers, politicians, cannibals and Longhorn producers. Each is different, and all have a very hard-pointed history.

[//www.head2tail.com/decor/](http://www.head2tail.com/decor/)

**Weight** 3 lbs

[Read More](#)

**Price:** \$100.00

**Category:** [Western Decor](#)



**CH-79**  
**\$70**

## CALF HIDE - CH-79

CH-79

CH-79

Calf Hide. Approximately 3 Ft long.

**Weight** 4 lbs

**Dimensions** 17 × 13 × 5 in

[Read More](#)

**Price:** \$70.00

**Categories:** [Hide-Calf](#), [Western Decor](#)





## CALF HIDE - CH-48

CH-48

CH-48

Calf Hide. Approximately 3 Ft long.

**Weight** 4 lbs  
**Dimensions** 17 x 13 x 5 in

[Read More](#)

**Price:** \$70.00

**Categories:** [Hide-Calf](#), [Western Decor](#)



## CALF HIDE - CH-46

CH-46

CH-46

Calf Hide. Approximately 3 Ft long.

**Weight** 4 lbs  
**Dimensions** 17 x 13 x 5 in

[Read More](#)

**Price:** \$70.00

**Categories:** [Hide-Calf](#), [Western Decor](#)





## CALF HIDE - CH-40B

CH-40B

CH-40B

Calf Hide. Approximately 3 Ft long.

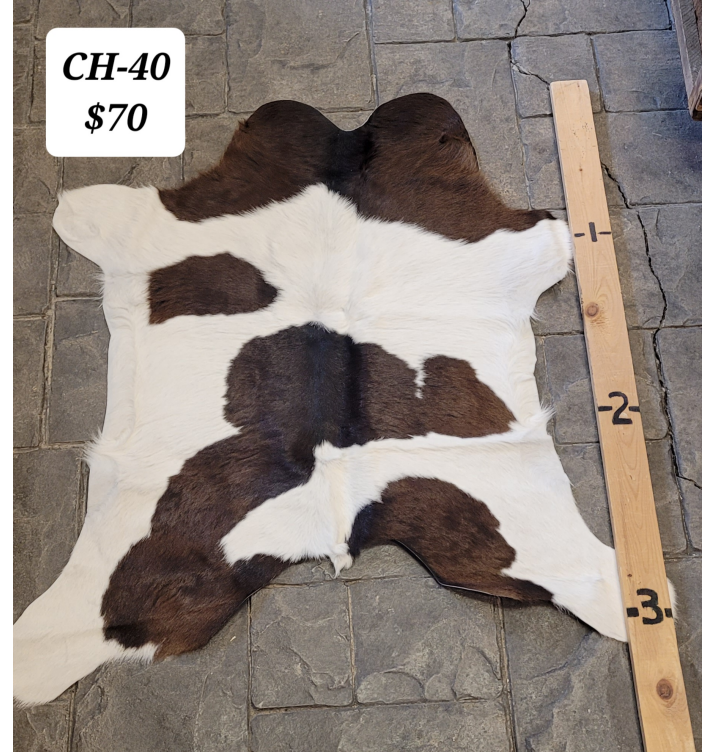
**Weight** 4 lbs

**Dimensions** 17 × 13 × 5 in

[Read More](#)

**Price:** \$70.00

**Categories:** [Hide-Calf](#), [Western Decor](#)



## CALF HIDE - CH-40

CH-40

CH-40

Calf Hide. Approximately 3 Ft long.

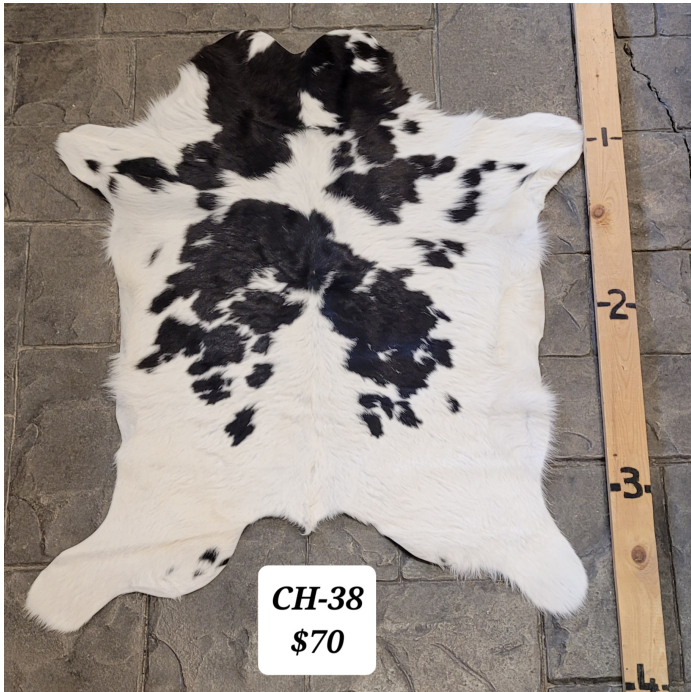
**Weight** 4 lbs

**Dimensions** 17 × 13 × 5 in

[Read More](#)

**Price:** \$70.00

**Categories:** [Hide-Calf](#), [Western Decor](#)



CALF HIDE - CH-38

CH-38

CH-38

Calf Hide. Approximately 3 Ft long.

**Weight** 4 lbs

**Dimensions** 17 x 13 x 5 in

[Read More](#)

**Price:** \$70.00

**Categories:** [Hide-Calf](#), [Western Decor](#)



CALF HIDE - CH-25

CH-25

CH-25

Calf Hide. Approximately 3 Ft long.

**Weight** 4 lbs

**Dimensions** 17 x 13 x 5 in

[Read More](#)

**Price:** \$70.00

**Categories:** [Hide-Calf](#), [Western Decor](#)





## CALF HIDE - CH-240

CH-240

CH-240

Calf Hide. Approximately 3 Ft long.

**Weight** 4 lbs  
**Dimensions** 17 x 13 x 5 in

[Read More](#)

**Price:** \$70.00

**Categories:** [Hide-Calf](#), [Western Decor](#)



## CALF HIDE - CH-239

CH-239

CH-239

Calf Hide. Approximately 3 Ft long.

**Weight** 4 lbs  
**Dimensions** 17 x 13 x 5 in

[Read More](#)

**Price:** \$70.00

**Categories:** [Hide-Calf](#), [Western Decor](#)





## CALF HIDE - CH-22B

CH-22B

CH-22B

Calf Hide. Approximately 3 Ft long.

**Weight** 4 lbs

**Dimensions** 17 x 13 x 5 in

[Read More](#)

**Price:** \$70.00

**Categories:** [Hide-Calf](#), [Western Decor](#)



## CALF HIDE - CH-22

CH-22

CH-22

Calf Hide. Approximately 3 Ft long.

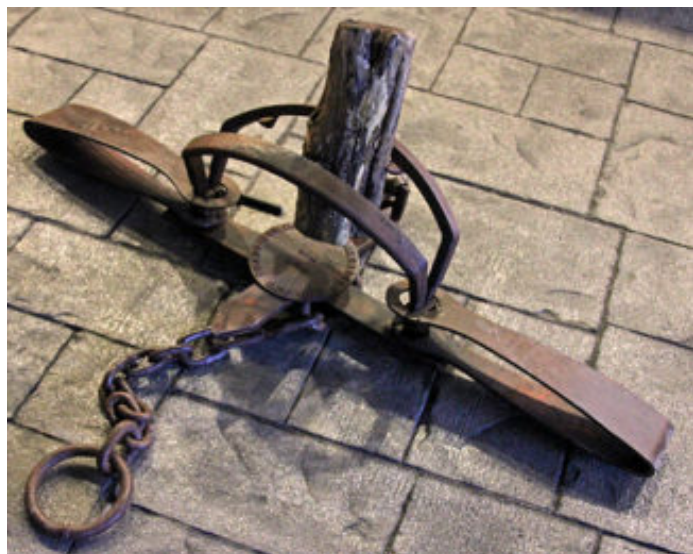
**Weight** 4 lbs

**Dimensions** 17 x 13 x 5 in

[Read More](#)

**Price:** \$70.00

**Categories:** [Hide-Calf](#), [Western Decor](#)



## #6 BEAR TRAP

#6 Bear Trap - Largest standard size historically used. Weighs 48 lbs, 46" long with a 17" jaw spread.

This size was used to capture the largest powerful bears. Dakota Fur and Trade Company pan.

Illegal to set in all but 2 states, however it can be used to keep neighbor kids out of flowerbeds and capture aliens stealing melons.

**MUST BE SHIPPED UPS ONLY**

**WHILE SUPPLIES LAST! WE CAN'T GET THESE ANYMORE!**

***(Some legal ramifications may follow.)***

**Weight** 80 lbs

[Read More](#)

**Price:** \$895.00

**Category:** [Western Decor](#)